



IDENTIFYING, ADVOCATING AND ACTING ON NEIGHBOURHOOD CONCERNS  
IN ORDER TO ENHANCE MOORE PARK.

## NEWSLETTER

P.O. Box 25, 1531 Bayview Avenue, Toronto, Ontario M4G 4G8 [www.moorepark.org](http://www.moorepark.org)



### REPORT FROM THE PRESIDENT

Your board has been very, very busy. Who knew, that in the sleepy hollow of Moore Park, everything from Visitation Centres to streetcar track storage would attract such attention and would require either leadership or at least a voice from the residents' association. This newsletter reflects some of our work in progress.

#### Visitation Centre

Despite signage implying the contrary, site plan approval and building permits are not yet in place for Mt. Pleasant Cemetery's proposed 24,000 square foot visitation centre, with paved parking for 82 cars. (See our website for more details.) We continue to believe that the cemetery is not zoned for such a structure and we particularly oppose its placement in the green space where the belt line and ravine trail meet. With the building intensification proposed by Toronto's Official Plan, our green space is more important than ever before.

We still have some legal angles to pursue and we are negotiating the ebb and flow of city hall. Please go to our website and "sign" our online petition opposing the development (we have hundreds of signatures already) and see the notice in this newsletter about the community meeting on May 31, which we are

co-hosting with Councillor Rae. Let us know, too, if you would like a lawn sign or a t-shirt.

Over the past year, we have spent hundreds of hours on this fight, since Moore Parkers have given us a very strong mandate to oppose these development plans. My special thanks to board members Margot Boyd, Martha Rogers and Chris Thompson who are most engaged in this and who have given so much of themselves. Also, my thanks go to Tim Bermingham of Blake, Cassels & Graydon LLP, our legal counsel, for his wise advice.

Visit the MPRA web site for developing news.

#### Committee of Adjustment & Variances to By-Laws

More and more, Moore Parkers are deciding to request variances to building by-laws and to intensify the size of their homes in relation to the size of their lot. The MPRA is notified of all requested variances and is given formal opportunity to take a stand on them. We are faced with the push and pull of the rights of private property owners (which we fully respect in principle) and zoning standards that help to protect the character of our neighbourhood and the rights of other property owners in Moore Park. Many people bought homes

*Continued on page 2*

### SPRING/SUMMER 2006 Volume III, Issue I

#### *In This Issue*

Report from the President	1
Earth Day	2
Police Column	3
Community Notices	3
MPRA Board of Directors	3
Moorevale Park Report	4
Ravine Walk	4
Opinions and Views of Moore Park	5
This Year's Fashion for Lawns	5
MPRA New/Returning Members	6
MPRA Membership Application/Renewal	7

### PUBLIC MEETING REGARDING THE MOUNT PLEASANT CEMETERY VISITATION CENTRE

Wednesday, May 31, 2006, 7:30 PM - 9:30 PM  
Our Lady of Perpetual Help School, 1-1/2 Garfield Avenue

The Mount Pleasant Group of Cemeteries has applied to the City of Toronto for site plan approval to construct a 24,000 square foot "visitation centre" with paved parking for 82 cars, at the south end of Mt. Pleasant Cemetery. This application also includes a request to remove 11 mature trees from the site.

Councillor Kyle Rae and The Moore Park Residents' Association are co-hosting a meeting of the neighbourhood to allow the applicant to present its plans. Councillor Rae is also inviting City staff from the Planning Department, the Forestry Department and the Legal Department to talk about their respective roles in this process.

Contact Councillor Rae's office at 416-392-7903 or contact the Moore Park Residents' Association at [president@moorepark.org](mailto:president@moorepark.org) for more information.



here in the first place because of the set backs between homes, set backs from the street and other standards upheld by by-laws.

First and foremost, we encourage applicants for these variances to show courtesy to their neighbours by sharing plans, explaining their proposals and gaining consensus on proposed changes. The MPRA committee which reviews Committee of Adjustment proposals consists of board members who are planners, lawyers and developers. Led by MPRA directors Ellen Greenwood, Gary Miller, Martha Reeve and Tim Costigan, they are in the process of defining, for publication, standards and protocols for MPRA involvement in variances. They will bring their recommendations to the board in September, and then to the MPRA Annual General Meeting – to you – in the early autumn.

Further, Martha Reeve is investigating the possibility of Heritage Conservation District status for Moore Park, just like that accorded North and South Rosedale. Implementation of this status requires the consent of homeowners and we will bring options to you over the coming year.

As an aside, I wish to thank Councillor Rae for bringing a city solicitor to bear on our behalf at the Ontario Municipal Board. Together, we opposed a severance and intensification proposal for the multi-plex units at Hudson Drive and St. Clair. Councillor Rae is a supporter of neighbourhood character and with his help, we won the day.

Property Taxes and Municipal Property Assessment Corporation (MPAC) Update

The unpredictable and seemingly unstoppable escalation of property tax in Toronto is something we are addressing through research and action. Over the past six years, taxes in Moore Park have increased roughly 57%: far faster than inflation and the average income level. Further, various interest groups have voiced serious concerns about the arbitrary process used by MPAC to evaluate taxation levels.

We support Councillor Michael Walker of St. Paul's (the ward next door to us) as he endeavours to regularize and make predictable municipal taxation levels, and as he considers what reforms may be appropriate for MPAC.

We will keep you posted.

In Closing

Please remember that your board and the people who serve on its committees are all volunteers. We are doing our best to carry out the mandate the community gives us in our charter and annually at our annual general meeting. We are thrilled to see membership numbers hitting new highs for recent years and as President, it is my pleasure to work with such a committed and caring group of individuals.

My thanks go to all of you who have said you are interested in getting more involved with our work. If we have not yet contacted you, we do have a database of all your names and will get in touch as our needs arise.

*Cindy Caron Thorburn*  
president@moorepark.org



**EARTH DAY**

Moore Park celebrated a rainy Earth Day, April 22, by cleaning up Moorevale Park and walking the ravine with a professional ornithologist, the executive director of the Toronto Wildlife Centre and a representative of the Toronto Field Naturalists.

Thanks to all who attended and especially to Chris Thompson, Alison Stanley, Margot Boyd and Martha Rogers who helped to organize the event.

## POLICE COLUMN

### Identity Theft

Identity theft is a topic that has been gaining prominence over the past few years. A recent 53 Division Community Bulletin suggested the following action if you suspect that your personal information has been hijacked or misappropriated to commit fraud or theft.

Take action immediately. The following basic actions are appropriate in almost every case:

- Keep a record of your conversations and correspondence. Start a log of dates, person(s) that you spoke with and exactly what they said.
- Contact the fraud departments of each of the two major credit bureaus.

Equifax: (877) 323-2598, for lost or stolen identification press 1, if you are a victim of identity theft press 2.

Trans Union: (877) 525-3823

- Request that a "Fraud Alert" be placed in your files. At the same time order copies of your credit reports.
- Contact the fraud department of creditors for any accounts that have been opened or tampered with fraudulently. This may include credit card companies, phone companies, banks and other lenders.
- File a report with your local Police or the Police in the community where the identity theft took place.

For more information including tips on how to minimize the risk of identity theft, and an Identify Theft Statement to help you notify institutions at which the theft has occurred, see the PhoneBusters National Call Centre web site. ( [www.phonebusters.com](http://www.phonebusters.com) ) PhoneBusters is currently central sourcing all pertinent information on Identity Theft to identify trends and patterns. Information is also used to assist law enforcement agencies in possible investigations.

Remember, there is no reason to be paranoid, there's just reason to be careful. If someone wants desperately to target you, they can probably get a lot of information about you -- so you just need to minimize the criminal's opportunities to get that information. You can make yourself a harder target and that is the best defense. If you are a victim, do not panic, you will not be out any money. The losses will be attributed to the banks and or companies associated with the fraud.

*Bill McCurdy*

## COMMUNITY NOTICES

### *Moore Park Tennis Club - Come Play With Us!*

Moore Park Tennis Club is now open for the 2006 Season. But it's not too late to join. Come and sign up for social activities such as the new Sunday afternoon Doubles House League or the Doubles for Singles night. Or drop in on our bi-weekly Friday evening round robins.

We have activities for the younger club members as well. Junior programs are off to a good start. Do you have youngsters looking for something to do in the summer? Sasha the club pro offers summer tennis camps in July and August. After-school junior programs are also offered in September.

Visit our website at: [www.mooretennis.com](http://www.mooretennis.com) for more information on our programs and activities. Membership applications can also be downloaded from our website. Or, come by the club during clubhouse hours.

#### **Club Hours:**

Monday to Saturday: 8 a.m. to 11 p.m.  
Sunday: 8 a.m. to 6 p.m.

#### **Clubhouse Hours:**

Monday to Friday: 5 p.m. to 9:30 p.m.  
Saturday and Sunday: 10 a.m. to 5 p.m.

---

### **Moorevale Park Lawn Bowling Open House**

The Lawn Bowling Club and the Moore Park Residents' Association are pleased to host an Open House.

Come give lawn bowling a try! Bring the whole family. Instruction will be provided.

Saturday, June 10th, 11 a.m. to 1 p.m. (Raindate: Sunday, June 11th)

Although kids of all ages are welcome, the lawn bowling sets will be for those over 13 years of age. There will be alternative equipment available for younger children.

*BBQ and ice cream! All free!*

RSVP to [moorevalelawnbowl@yahoo.ca](mailto:moorevalelawnbowl@yahoo.ca) or call Norah at (416) 920-9795. Please provide the number of adults and the age of children to attend.

## **MOORE PARK RESIDENTS' ASSOCIATION BOARD OF DIRECTORS: 2005 – 2006**

Alex Hahn, Garfield Avenue (Membership Committee)  
Astrid Guttman, Rose Park Drive (Pests & Pesticides Committee/Trees & Ravines Committee)  
Bill Hepburn, Harper Avenue (Treasurer)  
Bill McCurdy, Hudson Drive (Police Liaison)  
Bob Marley, Moore Avenue (Traffic)  
Brian Dourley, Inglewood Drive (Vice President)  
Chris Thompson, Moore Avenue (Cemetery Committee/Park Committee)  
Cindy Caron Thorburn, Hudson Drive (President)  
Ellen Greenwood, Inglewood Drive (Development & Zoning Committee)  
Gary Miller, Moore Avenue (Development & Zoning Committee)  
Greg Bingaman, Inglewood Drive  
Harriet Binkley, Hudson Drive (Hon.Secretary)  
Ivan McFarlane, St. Clair Avenue (Past President)  
Joanna Robertson, Inglewood Drive (Membership Committee)  
Margot Boyd, Moore Avenue (Pesticide Committee/Cemetery Committee)  
Martha Reeve, Cornish Road (Development & Zoning Committee)  
Martha Rogers, Hudson Drive (Cemetery Committee)  
Sandra Hamilton, Rose Park Drive (Park Committee)  
Tim Costigan, Rosedale Heights Drive (Development & Zoning Committee/Park Committee)  
(Plus 1 vacancy, to be filled)

## MOOREVALE PARK REPORT

The Park Committee is meeting monthly to consider a number of ways that we might be able to improve the park (and to consider any issues of the day).

We will be circulating a list of suggested improvements and the cost to execute them by the fall. We meet on the last Tuesday of every month at Tim Costigan's house. Just email him at [costigan@butterfield.com](mailto:costigan@butterfield.com) if you would like to be involved.

Here are some of the areas where we need immediate feedback:

**Staffing for the wading pool this summer** - The city won't staff the wading pool 7 days per week, but they will staff the pool on any five days we want. We could have the wading pool open on the weekends this summer by changing the time when the lifeguard is present from the current Monday to Friday to Wednesday to Sunday. Let us know what you think.

**Calling all architects** - We would love to get your help to consider some preliminary sketches of what a renovated club house would like in Mooredale Park (see below for more.)

**Open House for lawn bowling** - The Residents' Association and the Lawn Bowling Club are co-sponsoring a fun "bring out your family" day at the Lawn Bowling Club. Saturday, June 10th, 11 a.m. to 1 p.m.: BBQ and ice cream at the event.

Here are some of the longer-term items:

**Dogs** - The City Parks, Forestry & Recreation Division has been working for over a year to

create a new strategy. They want to facilitate the creation of peaceful co-existence between dog owners and other people that use the public parks. Legislation is before City Council, which would allow local community groups and residents to determine the policy at the local parks. Once the legislation passes, we will consider what approach to take. For now it is on hold.

**Wading Pool conversion or renovation: Splash Pad** - The current wading pool has a lifespan of about 5 years. The city has no plans to replace it or service it. We could upgrade it to include a number of water sprinklers that would give it the functionality of a splash pad. To do this we would have to raise \$50,000-\$70,000.

**Ice Rink** - The City will help us set up the outdoor ice rink. We merely need volunteers for when the weather starts to get cold - hopefully not for a while. If you know of anywhere to get hockey boards cheap let us know.

**Picnic Benches** - The City recently added new picnic benches for the park.

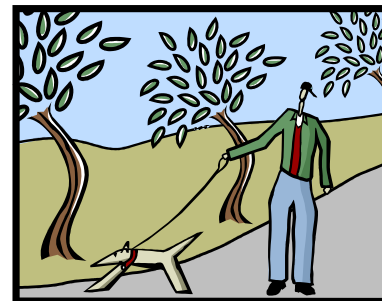
**Bulletin Board** - We hope to install a new bulletin board in the park - for community notices.

**Soccer nets** - The City will be providing us with children's soccer nets for community use in the park. They will be stored in the clubhouse. We are asking for the help of the Tennis Club. We ask that one would be able to "sign-out" the nets from the staff in the Tennis Club. Someone would present their license to the monitor. The monitor would keep the license and give the person the key to the storage to get the nets. When the person returns with the nets, they get their license back.

**Other rejuvenation of the Children's Equipment** - There was some talk of getting some new equipment and/or changing the playing surface to something more children-friendly. We need someone who is interested in this area to join us and help move this topic forward. Come on out!

**Club House** - We are interested in considering a joint project between the Residents' Association, the Tennis Club and the Lawn Bowling Club to renovate the club house. It is looking a little run down inside and there is duplication of facilities; e.g. one outside men's washroom, one outside women's washroom, a men's and women's washroom in the Tennis Club and then one washroom in the lawn bowling area. We could potentially revitalize the clubhouse. We could better use the current space and provide the current users with all the facilities they have now and more. We could also use the clubhouse for things like skating in the winter. This is only at the initial conversational stages. We are collecting ideas and dreams. This project won't go anywhere unless all three parties find it interesting. We would love your ideas, and if you are an architect, we would love your help.

*The Park Committee*



### CARSTOWE BRIDGE AND STREETCAR TRACKS: AN UPDATE

The City has delayed by a year – to spring 2007 – the closure and rebuilding of the footbridge over the railway tracks at Carstowe. Expect construction work on the railway bridge over Mt. Pleasant, however: traffic will be restricted this summer as repairs are made.

Also, streetcar tracks will be removed from their storage site on St. Clair (near Inglewood) as soon as construction resumes on the dedicated St. Clair line, likely in June. Nearby residents will receive notice from the city with more details.

### RAVINE WALK

June 4 at 2 p.m.

Come join us for a walk through the ravine with Ruthanne Henry, OALA, CSLA, Forestry Planner for the South District, Ravine Protection Unit of Urban Forestry Services. Ruthanne will review the City's plans for, and projects in, the Moore Park ravine and we may visit some private ravine properties which represent exemplary ravine management. We will likely amble down toward Rosedale and be joined by members of the North Rosedale Ratepayers' Association. We will meet, rain or shine, at the Gazebo at the entrance of the Mt. Pleasant Cemetery on Moore Avenue at 2 p.m., June 4. Check our website for any updates.

For property owners on the ravine:

The City of Toronto urban forestry department is available to help owners develop management plans for ravine properties and can help direct you to professionals who can carry out the work. For more information please contact Ruthanne Henry, Forestry Planner for the South District, Ravine Protection Unit of Urban Forestry Services by email [rhenry@toronto.ca](mailto:rhenry@toronto.ca)

*Astrid Guttman*

## OPINIONS AND VIEWS OF MOORE PARK

This occasional column allows Moore Park residents to express their opinions and views on subjects that affect Moore Park. Views expressed here are those of the author(s) and not necessarily those of the Moore Park Residents' Association. Do you have an opinion to share? Do you have an historic anecdote of note? Please send it, along with your name, phone number and email address, to the MPRA post office box or to [president@moorepark.org](mailto:president@moorepark.org) and we will consider publishing it in a future edition.

### Please Say "NO" to Gas-Powered Leaf Blowers!

A concerned group of Moore Park residents wants to make gas-powered leaf blowers a thing of the past in our neighbourhood. The very air we breathe depends on it.

Why?

#### Green House Gas Emissions

One-half hour of leaf blower operation generates as much hydrocarbon (smog-forming) emissions as 7,700 miles of driving a car

at an average speed of 30 mph (in the San Francisco Bay Area alone, gas blowers emit 16 tonnes/day of smog-forming compounds.)

#### Air Quality, Noise Pollution and Worker Safety

Gas-powered leaf blowers...

- Churn up clouds of debris containing animal droppings, pesticides, bacteria, mould and fungus spores, pollen, and brake dust, spreading these through the air and onto adjacent gardens and sidewalks
- Produce objectionable noise, often as high 90 decibels, violating Toronto's Noise By-Law (70 dBA at 15 metres)
- Put workers at risk of respiratory and hearing damage by their employers who think YOU want the service.

#### What can we do?

Call the manager of your lawn care company. Ask the company not to use gas-powered leaf blowers on your property. Suggest that they switch to electric blowers (which are better for air quality, cheaper and quieter) or for small lawns and gardens, just use rakes and brooms.

Make a huge difference today with just one phone call to your lawn care company!

For more info on this issue see the article on our website ([www.moorepark.org](http://www.moorepark.org)) entitled "Leaf Blowers – They're Baaack!!!"

*Lorraine Tinsley, Heath Street East and Johanna Lawson, Rose Park Crescent*



## PAID ADVERTISING

Contact [president@moorepark.org](mailto:president@moorepark.org) or write to our post office box address for information on paid advertising in this section.



The store might change but the great service never will.

**Summerhill**  
MARKET

Serving our customers in the heart of Rosedale for over 50 years

446 Summerhill Avenue • Toronto, Ontario • M4W 2E4  
Phone: (416) 921-2714 • Fax: (416) 924-6767 • Catering: (416) 921-8056  
[www.summerhillmarket.com](http://www.summerhillmarket.com)

## THIS YEAR'S FASHION FOR LAWNS...

When you think "lawn" this year, think long, lush and luxurious. Those bald, stunted, golf course-like greens are definitely passé. Not only is a short lawn not fashionable, it promotes weak, diseased plants. When the US Department of Agriculture wants to study disease and weed problems, how do they do it? They practice frequent mowing of the test site to golf course length to stress and weaken the grass!! (We certainly wouldn't cut our other plants to a one-inch length, would we?!)

In the Spring and Fall, cut the grass to 2 ½ to 3 inches in length. During the summer months, cut the grass to 3 inches. Allow the grass to grow at least one inch above the mowing height before mowing.

Remember that Surgeon General's report in 1961 that said "smoking causes cancer?" Well that's where we are now in the pesticide debate... And just like back in the 60s, 70s and onward, the arguments against the statistical proof continue. The chemical companies assert that researchers haven't shown how they cause cancer, so their products must be safe.... Sound familiar? So what is this year's fashion? Adherence to the City of Toronto guidelines with respect to healthy lawn maintenance and safe products. So, those chemical-based weed and feed products at the big gardening stores? Illegal – leave them on the shelf!

As a reminder: Toronto's Pesticide By-law came into effect on April 1, 2004 and restricts the outdoor use of pesticides on public and private property. Full enforcement of the by-law is being phased in as follows:

- For lawn care companies, commercial properties and other pesticide users, September 1, 2005, was the date after which fines could be issued for non-compliance.
- For homeowners, Public Health Inspectors will initially provide homeowners with educational materials and issue warnings if pesticides have been used contrary to the by-law.

As of September 1, 2007, homeowners who do not comply with the by-law may be fined. A Public Health Inspector may issue a ticket or serve a summons for non-compliance. A ticket has a set fine of \$255.00. Under the Provincial Offences Act, a summons can carry a fine of up to \$5,000.00 and the exact fine would be determined in court.

What if you see someone applying pesticides?

If you suspect that a pesticide has been used in violation of the by-law, you can contact Toronto Public Health at 416-338-7600. Public Health Inspectors will respond to all complaints.

Handy Hints:  
Look at your lawn as an ecosystem that

needs to be kept balanced and healthy, in order to maintain a natural lawn. Pesticides kill target and non-target species, eradicating an ecosystem. Chemical fertilizers suddenly release large amounts of nitrogen into the ground, also upsetting the balance and inviting both weeds and grubs which thrive on nitrogen. Utilize compost instead.

Establishing Reasonable Tolerance Levels: As lawn guru Carole Rubin states: "If you want a perfect green carpet, buy one and nail it down. Very few weeds actually harm a lawn, and some are quite attractive."

Carole Rubin's logic is impeccable when she states: "Take some time to think about your priorities. Putting-green, zero-weed tolerance, lots of toxic chemicals? Or playground for your children and pets, zero chemicals and

some dandelions?"

For a more comprehensive list of hints and information regarding the municipal by-law, you can consult the City of Toronto website at: <http://www.toronto.ca/health/pesticides/>. Lawn care guru Carole Rubin has written an excellent little book that is reasonable, understandable and entertaining called "How to get your LAWN & GARDEN off drugs".... Check our website at [www.moorepark.org](http://www.moorepark.org) for more lawn care helpful hints.

Margot Boyd



## MEMBERSHIP LIST FOR MOORE PART RESIDENTS' ASSOCIATION AS AT MAY 1, 2006

Membership dues received after May 1, 2006 will be noted in the autumn newsletter.

Louis & Rosalind Lefeber, Allan and Elaine Rae, Jim and Sue Sigundson, Eleanor Carley, Dave and Wendy Tilford, Barry R. Peacock, Michael and Barbara Rea, Edward Reeser & Elizabeth Forster, John and Sue Clyma, Ned and Sue Macaulay, Janet Bannister & Rob Rutledge, Michelle Gage, Martha & Dave Reeve, Catherine and John McCutcheon, Trish Callon and Gavin Robinson, Heather Trim, Shirley Breithaupt, Myra Schiff, Eva Gold Lares, Lorraine & Boyd Pederson, Debbie Babington, Andrew Steen, John (Jack) Kyle, Alex Hahn & Allan Avard, Wendy Shaw & David Kent, Roger & Pat Lace, J.F & D. Perl, William Broadhurst, John & Gail MacNaughton, Zabeen Hirji, Mark Nowaczynski, Mary Ellen & Rowell Aronoff, Denise & Dennis Starritt, Paolo Pierobon, Angela Stirpe, Gordon & Katri West, Tara Burns & Tony Rodrigues, Dagmar and Gerry Stafli, Mona and Kevin Malone, Kristin & Dan Finkleman, Paul & Martha McLean, Susanne (Mrs .R.) Law, Mary & Brent McPherson, Diana & Ronald MacFeeters, Linda and Gordon Weir, Shea Bunston, Shaun Goodman, James McKellar, Mrs. C.Fox, Soraya Farha & Frank McLaughlin, Mary and Clive Clark, Cindy and Douglas Bain, Larry & Barbara Ann Hynes, Bill & Anne Hepburn, David Klein, Kathleen Payne, Eugene Beck, Kathleen Bruce-Robertson, Marsha Copp & John Clark, T. Arnold, Jean Bayley, Ian & Janet MacDonald, Cathy Cranston, John Coke, Catherine Gagne, James Wallace, Barbara & Andrew Malcolm, Bill & Lucia McCurdy, Thomas Bauer, Laura Jessome, Sean Gilday, Jane Caskey, Susan and Greg Latremoille, Denise Fujiwara, John M. Campbell, Jacqueline Kirk & Tony Baylis, Dianne Gartley, Harley Hubble, George Bothwell, Drew & Susan Allen, Cindy Caron-Thorburn & Craig Thorburn, James Cowan & Barbara Johnston, Valerie & Michael Bertouche, Elizabeth and Neil Vosburgh, Harriet & Greg Binkley, G. Neil MacCarl, Gregory & Tartina Petrela, Robert & Jilla Williams, M. Poersch, Trish and Ted Stuebing, Martha Rogers, Leonard Ginsberg, Ellen Watley, George and Joan Finlayson, Bruce Patterson, Barbara Hannach,

Valerie Kuinka, Richard Margison, Pam Rosenthal & Bill Estey, Rita Burak, Peter Barnes, Carrie & Patrick Scafe, David and Patricia MacLeod, Mary & Michael Anderson, Kenneth & Katherine Thompson, Robin Heintzman & Gordon Currie, Robin Fielding, Brian Gover, Robert Mifflin, Yves Dufour, Elizabeth and Alan Dilworth, Greg & Sara Bingaman, Kelly & Lenore O'Connor, Jennifer Warren & Mark Woolgar, Caroline & Chris Newall, Greg & Susan Guichon, Maarten and Carol Bloemen, Thomas F. C. Cole, Adair and Ian Hope, Nancy & Mike Preston, Mary and Nood Hill Ruby, Brian Dourley, Julia Holland & David Crawford, Tony Gaffney, Dee Patterson, Barbara Fraser, Simon Mucalov, Ellen Greenwood, Wilma & Jim Spence, David Wiley, Diane Perry, Tony Devir & Joanna Robertson, Larry & Beatrice Herman, Nancy & Richard Stoneman, Pamela & Stephen Warren, Judy & Larry Ward, Helen Byrne, David Browne, Jan & Joan Mollenhauer, Lesley Morison, Margaret Agar, George Dzuro, Trudy White, Jennifer and Bill Vlaad, Paul Boucher, Barbara Collins, Michael Vels, Bob & Norma Lounsbury, Ted & Paula Gomme, Catherine Jarman, David Knechtel, J. Charles Zimmerman, Nicole Koteff, Gary Miller, Leonard & Ann Knott, Diane Fennell, N. Epstein, D. Goldbloom, Jean & Paul McGrath, John Welsman, Cherie Camp, Nigel McGrath, Jacquie Dale, Nancy & Larry Murray, Dawn & Bruce Robb, Nigel Johnston & Pam Hillen, Beverly Chernos, Michael Kirk, Jane and Jim Drake, Andrea & Stephan Centa, Sue & Mark MacDonald, Susie Opler, Paul Monahan, Haydn and Eva Davies, Joannah Lawson, Diana & Ward Pitfield, Hana Kolin, Iain and Irene Hunter, Rimona Natanson, Adrian Nachman, Elizabeth Stewart, Robert Spence, Gillian & Gord Bogden, James and Mary Anne Mahoney, Susan R. Ridgeway, Cheryl Tibbets, Lonsdale Holland, Sandra Nishikawa, Vincent De Grandpre, Sandra Hamilton, Wayne Morrow, Hugh & Mary Kay Kelly, Dave & Susan Prince, Fred & Ursula Franklin, Dave Navin, Anne Lazenby, Robert and Delia Thomson, Ian & Betsy Putnam, Robin & Jim Porter, Astrid Guttmann & Jeff Pentland, Susan & Peter Gordon, Jack and Pauline Stoddard, Bryan Gooderham, Sarah Caskey, Richard Swan, Patricia and Jeremy Gawen, Frank & Nadine De Palma, Gail Drummond, Robert Durrance, Margot Howard & Peter Ballantyne, Anne Biringier, Catherine & Stephen Clark, Tim Costigan & Kathleen McLaughlin, Sharon Hudson, Mike Devlin, Stephen

Harris & Leslie Buskard, Don & Jane Wright, Sue & David Rainville, Mary Hatch, Irene & Allan Reford, Wendy & James Southey, Jason Morsink & Linda Kemp, Keith and Mary Frances Hendrick, Julie & Reed Ballon, Margaret & David Walsh, Jean Fraser & Tom Rahilly, Mike and Pat Butler, Melanie Aitken, Andrew Iacobucci, Barbara & Doug Wilkins, Kathie and Michael Wilson, Mary & Jamie Keating, David Needham, Brenda Suddard, Dr. Clive & Mary Chamberlain, Karen Pidgurski & John Delmage, Nuran and Deni Manduric, Sandi Wall, Jan & Markiana Normandale, Brian and Susan Wayne, Elizabeth Bryck, Ian & Kathy Baker, Trish Leahy, Dom Killingier, Peter Jacobsen, Lidia Mattucci-Jacobsen, John & Shirley Hynes, Robert P. & Mrs Wright, Ivan McFarlane, Patricia Burns, Arthur Hammond & Susan Martin, Marguerite H. Hunt, Henry Gooderham, & Lil Simon, Melanie Mersch, Bill Verner, Molly Weaver, William Rosenfeld, Catherine M.L. Smith, Joan D. Clayton, Katherine Cray & Michael Stoyan, Earle M. and Adrienne Taylor, Karen Kellner, Terry Nicholson, Diane Bainbridge, John and Elizabeth Akitt, Sheila J. Moore, Jayne Gresham, Robert Hoffmann, Monika Merinat, Frederic Geisweiller, Natasha & Gordon LaRock, Catherine (Mrs.) Szebeny, Dr. Russell Tate, Margaret & Grace Kwan, Miriam Kelly, Marie & Paul Bracken, Steve McAdam, Mary Anne Cecutti, Ann Kinney, Lisa Mandel, Emmy & Walter Homburger, Michael & Breeda McClew, Ian & Cathy Preston, Ann & Weldon Thoburn, Wendy Cameron, Debra Flom, Nadine D'Aguiar, Adam Bobker, Peter & Yvonne Worthington, Michael and Cheryl Campbell, Suzanne & Mike Farley, John & Sharon Newlands, June V. Malabar, George & Heather Dickson, John Hall, Dr. & Mrs. Joan Mandarino, Jan Wainwright, Vic Freidin, Rebecca & Anthony Clements, Lyz Sayer, Ed & Marie Thompson, Chris Thompson & Alison Stanley, Jane & Ken Rodmell, Mrs. S. MacNaughton, Angela Fernandez, Matias Milet, Margot Boyd, Bob Marley, Daryl Favor & Gordon Robinson, Rob Parry, Lynne Olver, Margaret Stewart & Andrew Semenak, Karen MacPherson & Derrek Wong, Alex MacFarlane, Helmut Dostal & Caroline Tapp-McDougall, Fei-Fei Liu, Richard Wong, Catherine and James Grant, Anne Richards, Bob Bentley, Peter Collibee & Maryse Roy, Carolyn & David Winfield, Wendy & Ian Brown, Michael and Shea Bunston, Barry Clegg, Leslie Cooper

# MOORE PARK RESIDENTS' ASSOCIATION (MPRA) MEMBERSHIP APPLICATION/RENEWAL 2006

Date: \_\_\_\_\_

Name/Resident(s): \_\_\_\_\_

Street Address: \_\_\_\_\_

Postal Code: \_\_\_\_\_

Tel: (H) \_\_\_\_\_

E-mail: \_\_\_\_\_

Membership is based on a calendar year at a cost of \$25.00 per household. (MPRA is a not-for-profit association and fees cover newsletters, paper, postage/delivery, annual and community meetings.) Donations to further our work are also accepted, however tax receipts cannot be issued.

**☺☺ Through MPRA you may also purchase "Historic Moore Park" (retail \$10.00)  
A great gift idea! ☺☺**

Attached is my cheque for annual membership (\$25):	\$ _____
Attached is my donation to the MPRA:	\$ _____
I would like ___ copies of <i>Historic Moore Park</i> @ \$10 each:	\$ _____
<b>TOTAL:</b>	<b>\$ _____</b>



The following are committees comprised of interested MPRA members who strive to better our community. Please let us know if you are interested in joining or being contacted by any of the committees for further information:

COMMITTEE	Wish to join	Wish to be contacted
Parks		
Trees/Ravines		
Pests/Pesticides		
City Planning		
Police		
Traffic Issues		
Membership		

Please send cheque payable to:  
**Moore Park Residents' Association**  
**P.O. Box 25, 1531 Bayview Avenue**  
**Toronto, Ontario M4G 4G8**

**BE PART OF THE SOLUTION!**

<i>Office Use Only</i>	
<i>LTR/HMP</i>	<i>MEMB</i>